



Ardrossan Gardens,



£329,950

Leasehold

- Two Double Bedrooms
- First Floor Maisonette
- Refitted Kitchen
- Spacious Lounge
- Huge Loft Space
- Private Garden
- Walk to Shops, Schools & 2 Stations



This spacious first floor maisonette is situated within walking distance of not only two mainline railway stations, but is also just five minutes walk from a handy parade of shops and sought after local schools.

Having been gradually refurbished over the time of the current owner's occupancy, the property is in excellent condition and offers a stylish kitchen with windows to two aspects allowing in plenty of natural light.

There is a spacious lounge and the sizable second bedroom is currently used as a dining room.

Being on the first floor this maisonette has the benefit of a huge loft space, ideal for downsizers in need of a lot of storage space.

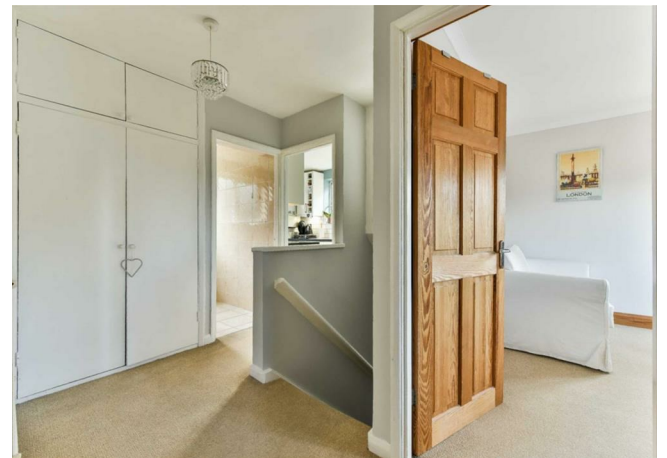
Perhaps the biggest single selling point however is the private garden which is mainly laid to lawn. To find a property in this price range with so much private outside space is quite a rarity in the area.

Early viewing highly recommended by sole agents.

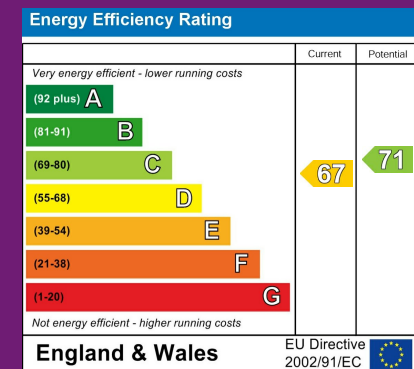
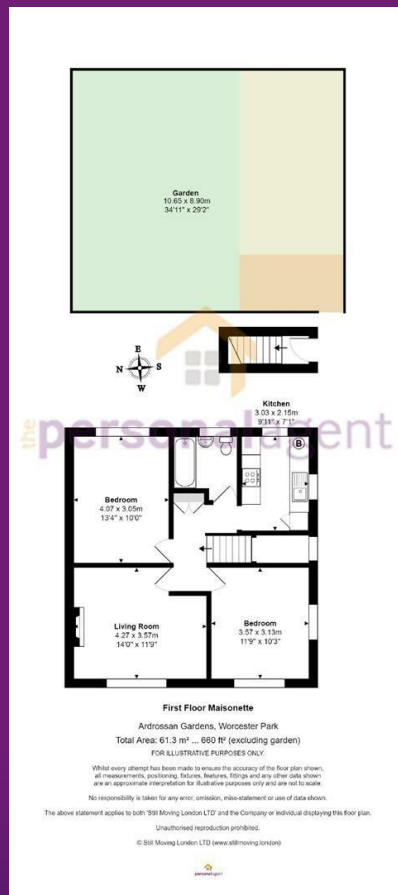
Stoneleigh is a highly sought after residential area with a bustling Broadway of shops and restaurants at its heart, as well as a mainline railway station with services to Waterloo every twenty minutes. There is a choice of infant and junior schools within the immediate vicinity and the Historic Nonsuch Park runs alongside the South East side.

Both the M25 and A3 are easily accessible giving a straight forward route to London and both Heathrow and Gatwick international airports.

Tenure: Leasehold.







Epsom Office
2 West Street
Epsom, Surrey KT18 7RG
T: 01372 745 850

Ewell Office
220 Chessington Road
West Ewell, Surrey KT19 9XA
T: 020 8394 1234

Stoneleigh Office
62 Stoneleigh Broadway
Stoneleigh, Surrey KT17 2HS
T: 020 8393 9411

Banstead Office
141 High Street Banstead,
Surrey SM7 2NS
T: 01737 333699

the personalagent
sales@thepersonalagent.co.uk | thepersonalagent.co.uk

Please Note: Whilst every attempt has been made to ensure the accuracy of the floorplans contained here, measurements of doors, windows and room areas are approximate and no responsibility is taken for any error, omission or mis-statement. These plans are for representation purposes only and should be used as such by and prospective purchaser. The services, systems and appliances listed in the specification have not been tested by The Personal Agent and no guarantee as to their operating ability or their efficiency can be given. All images and text used to advertise our properties are for the sole use of The Personal Agent Ltd.



